



**MONTGOMERY COUNTY**

*Maryland*

**BUSINESS  
CENTER**

**From Start to Growth, We're Here to Help.**



[www.MontgomeryCountyMD.gov/Business](http://www.MontgomeryCountyMD.gov/Business)

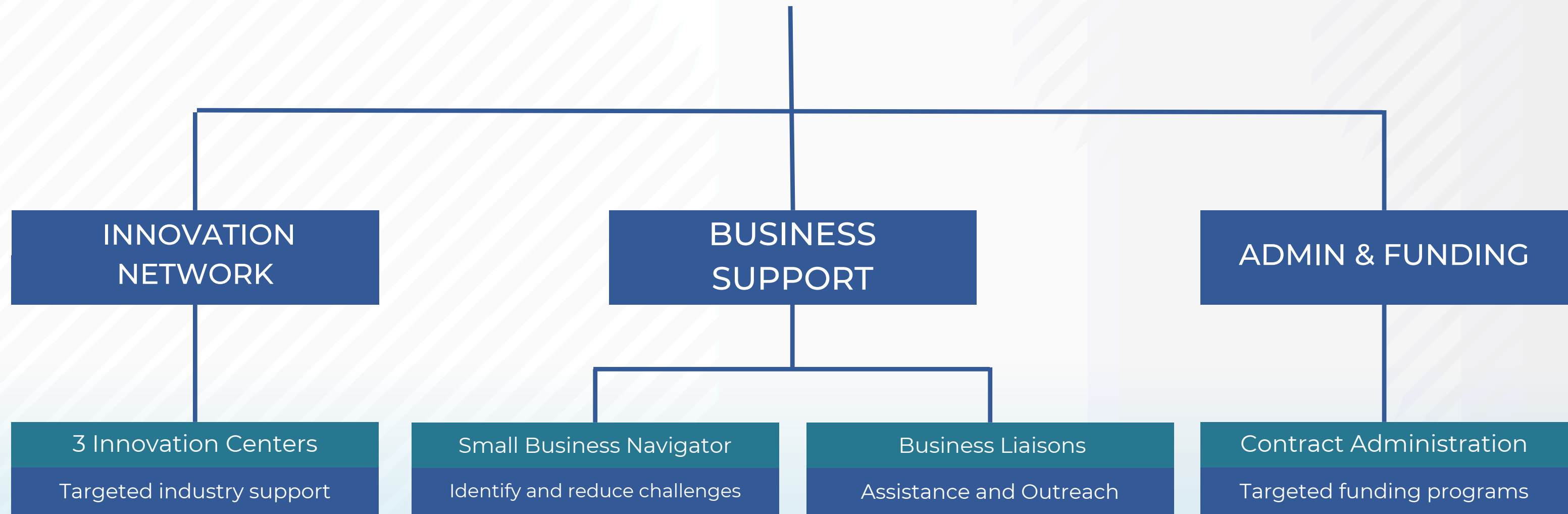
# About us

We provide **tailored support** to County businesses at every stage of their journey, from inception to expansion.

Our team focuses **guiding retail, food service industry, and service-based businesses** through the complexities of county government regulations, including licensing, permitting, procurement, and related procedures.

We **connect businesses** to county resource partners, offering access to technical assistance, workforce development support, promotional opportunities, funding sources, and other valuable resources.





# County Resource Partners



# Montgomery County Loans

\*Programs funded by Montgomery County

## Life Asset:

- Life Asset, Inc. offers micro-loan ranging from \$500 - \$10,000.
- Requires peer group (3-5) of like-minded entrepreneurs.
- Website: <https://lifeasset.org/>

## LEDC:

- LEDC offers micro-loan from \$500 - \$250,000.
- Traditional lending process.
- Website: <https://www.ledcmetro.org/smallbusiness>

# **MONTGOMERY COUNTY MOVE GRANT PROGRAM**



[www.MontgomeryCountyMD.gov/Business](http://www.MontgomeryCountyMD.gov/Business)

# Move Program

(Make Office Vacancy Extinct)

- MOVE Grant Program is for:
  - Businesses signing its first commercial lease in the County; OR
  - Businesses signing an expansion lease that adds at least 500 square feet to original lease.
- General Criteria (review website for all eligibility requirements)
  - **Lease Term:** The lease term must be 36 months or longer.
  - **Lease Type:** The lease must be for commercial space located within the county.
  - **Application Deadline:** The completed grant application must be submitted within 180 days of the lease execution date.
- Excluded businesses (per County law)
  - Retail
  - Restaurants

# MOVE Grant Award Calculation

- **First-come, first-served:** Order is determined by date of completed application
- **Funding is limited:** Awards are subject to available funding.
- **Award amount** depends on total amount of new square footage leased in the County
- **Maximum award:** \$150,000.



## MOVE Grant - Award Calculation

Eligible Square Feet	Award per Eligible Square Foot	Maximum Award
Less than 7,500	\$8	\$60,000
7,501 – 10,000	\$12	\$100,000
More than 10,000	\$12.50	\$150,000
Strategic Industry	\$15	\$150,000

# MONTGOMERY COUNTY J.O.B.S. PROGRAM



[www.MontgomeryCountyMD.gov/Business](http://www.MontgomeryCountyMD.gov/Business)

# J.O.B.S. Program - Job Creation

The Job Creation fund has \$10MM appropriation

- **Incentivizes:** New, full-time jobs in Montgomery County.
- **Award Types:** Wage Incentive: \$10,000 per new job (or \$12,500 in designated areas).
- **Capital Investment:** Up to \$50,000 for eligible capital projects.
- **Targeted Industries:** Corporate headquarters, national nonprofits, and businesses in advanced technology, cybersecurity, hospitality, life sciences, and quantum computing.
- **Eligibility:** Businesses that create new jobs and meet specific requirements.
- **Maximum Award:** \$500,000

# J.O.B.S. Program - Founder's Equity Fund

The Funder's Equity fund has \$3MM appropriation

- **Incentivizes:** Economic growth by investing in underserved businesses in Montgomery County.
- **Award Types:** up to \$100,000 to companies that have raised \$25,000-\$2 million.
- **Target:** Early and growth-stage companies in Montgomery County, particularly those owned by minorities, women, veterans, or individuals with disabilities, and those located in disadvantaged areas.

# **MONTGOMERY COUNTY INNOVATION NETWORK FACILITIES**



[www.MontgomeryCountyMD.gov/Business](http://www.MontgomeryCountyMD.gov/Business)

# Innovation Network Facilities

- **Silver Spring** Innovation Center (County owned)- Focused on MFD Companies
  - 20,000 sf of office space in downtown Silver Spring, 15-20 companies, near Metro.
- **Rockville** Innovation Center (County owned)- Focused on MedTech/Medical Device Companies
  - 23,000 sf of office space in Rockville Town Square near Metro, 20-30 companies.
- **Germantown** Innovation Center (County leased until 2026)- Focused on Biotech/Life Science Companies.
  - 32,000 sf of office and 12 wet labs in partnership with Montgomery College, 15-20 companies.

# Incubator Offerings

- **Short-Term Flexibility:** Enjoy the freedom of flexible lease terms.
- **Move-In Ready:** Our spaces are fully equipped and ready for business.
- **Bridging the Gap:** The perfect solution for businesses transitioning from home offices to commercial spaces.
- **Tailored Support:** Benefit from our specialized programs designed to meet your unique needs.

# Membership Options

- Virtual
- Co-working (Rockville only)
- Onsite (Full Membership)



[www.MontgomeryCountyMD.gov/Business](http://www.MontgomeryCountyMD.gov/Business)



[BusinessCenter@montgomerycountymd.gov](mailto:BusinessCenter@montgomerycountymd.gov)



[MontgomeryCountyBusinessCenter](https://www.instagram.com/MontgomeryCountyBusinessCenter)



[MontgomeryCountyBusinessCenter](https://www.facebook.com/MontgomeryCountyBusinessCenter)



[Company/Montgomery-County-Business-Center](https://www.linkedin.com/company/Montgomery-County-Business-Center)

